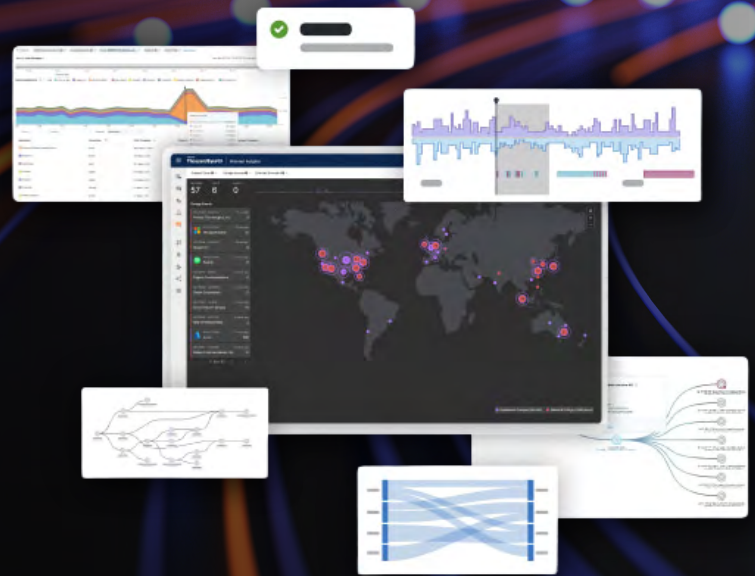


Intelligent Network Visibility for OSHEAN Members

- Actionable insight.
- Lower cost.
- No added complexity.

OSHEAN is enhancing its Cisco ThousandEyes offering to give members something most monitoring tools fail to deliver: a complete, real-time understanding of network performance that drives action.

By integrating Netflow-based Traffic Insights into the ThousandEyes platform, OSHEAN enables a unified view across network, application, and traffic layers, transforming fragmented data into a single, coherent operational picture.



Network, Application, and Traffic in One Place

Modern environments demand more than siloed monitoring tools. OSHEAN's ThousandEyes service brings together:

- Synthetic testing to proactively measure performance
- Endpoint monitoring to understand user experience
- NetFlow-based Traffic Insights to reveal traffic behavior in context
- SNMP visibility into network device health and performance

The result is a true single-pane-of-glass experience, where teams can quickly pinpoint issues, understand root cause, and act with confidence.

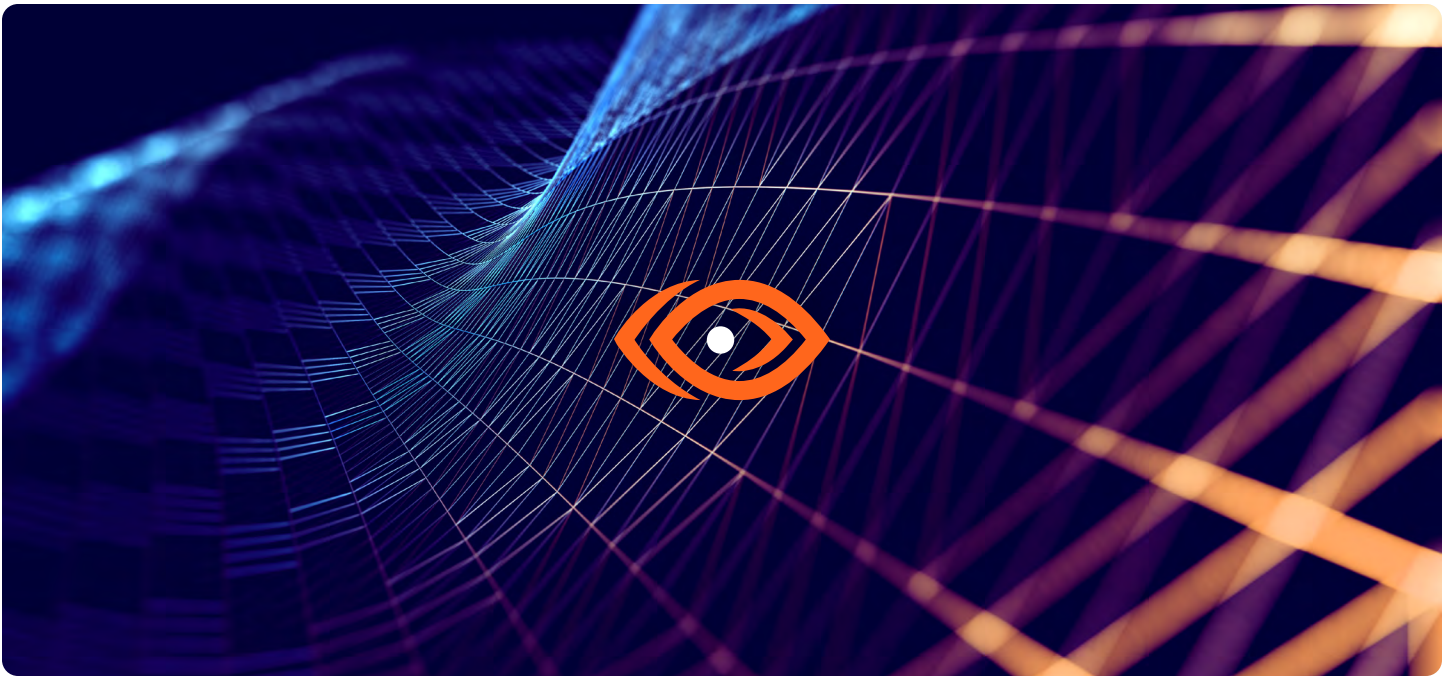


From Visibility to Actionable Intelligence

OSHEAN's approach ensures members can:

- Correlate traffic patterns with application performance and user impact
- Identify bottlenecks across internal and external network paths
- Detect anomalies faster with integrated telemetry across layers
- Make informed decisions without jumping between tools

This operational intelligence shortens time to resolution and improves end-user experience.



Built for Efficiency in Resource-Constrained Environments

Traditional NetFlow and SNMP solutions often require additional infrastructure, licensing, and operational overhead. OSHEAN's model is fundamentally different:

- No new tools required—leverage existing ThousandEyes investment
- Flexible unit allocation across synthetic testing and Traffic Insights
- Reduced tool sprawl, eliminating reliance on costly legacy platforms like SolarWinds
- No incremental budget needed to expand visibility

Members can extend their visibility footprint while optimizing cost, without adding complexity.



Strategic Visibility Across Regional and Upstream Networks

OSHEAN's ThousandEyes deployment is already instrumented across key network vantage points, including Boston, New York, Providence, and Albany. Combined with OSHEAN's sub-tenant delivery model, members can tap into a highly efficient, shared visibility fabric, gaining insight not just within their own networks, but across critical upstream dependencies.



A Smarter Way to Scale Network Intelligence

For existing ThousandEyes users, enabling Traffic Insights is simple:

- No new deployment
- No additional infrastructure
- Just reallocate existing units to unlock deeper visibility

For organizations evaluating their monitoring stack, OSHEAN offers a more efficient, consolidated alternative, one that replaces fragmented tools with a unified, scalable approach.

In an environment defined by growing demand, tighter budgets, and increasing complexity, OSHEAN's ThousandEyes service helps members see what's happening across their networks in real time, understand why it's happening, and act quickly with confidence.

Contact OSHEAN

to explore how Cisco ThousandEyes can strengthen your organization's network visibility.

[CONTACT US TODAY →](#)